

Viola 2

Sex and Death at Covent Garden

1. Intrada

Lento

Charlie Barber

♩ = 60

5

mp *cresc.*

11 **A** *tranquillo*

p

19 **B** 7 **C**

p *cresc.*

31 **D** 6

poco a poco *mf*

Viola 2

41 *mf* *cresc.* *f*

47 *dim.* *p* *mute in*

52 **E** *con sord.* *p*

57 *Rit.* *Attacca* *mute out*

2. Recitative + Aria

♩ = 116

63 **F** *senza sord.* *f* *f* *p*

70 *f* *p* **G**

79 *p* *p* *p* **H**

87 *cresc.* *f* *p*

94 *p*

98 *cresc.* *f*

Viola 2

102 **I**

109

115 **J**

123 **K**

130

138 **L**

146 **M**

155

160

p *f* *p* *f*

p

p *cresc.* *f*

p *f*

p *mf* *p*

mf *f* *mf* *cresc.*

f *legato* *p* *cresc.*

f *p*

f

Viola 2

167 **N**

3 2

mp *p* *mf*

178 **O**

p *p* *f* *mp*

188 **P**

p *cresc.* *mf* *p* 10

205 **Q**

mp *p* *cresc.*

212

219 **R**

mf *dim.* *p* *cresc.* *mf* *f*

226 **Attacca**

dim. *p*

3. Allegro

♩ = 132

233 **S**

p *cresc.* *f* *p* *f* *p* *cresc.* *f*

Viola 2

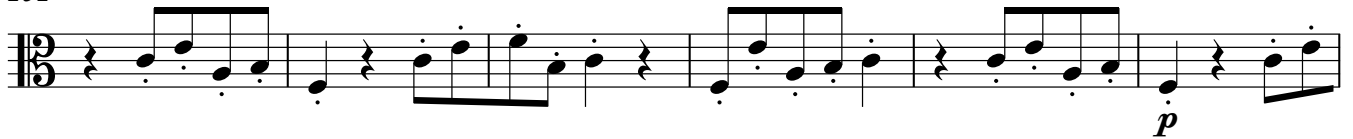
239



246



252



258



264

T



269



274



279



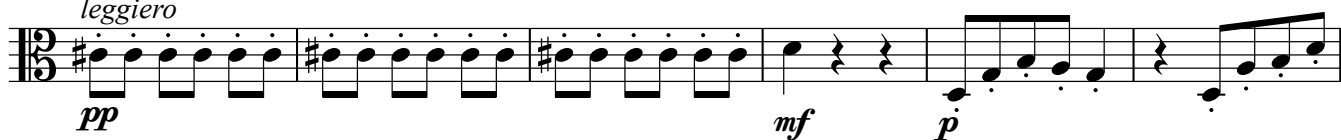
283



Viola 2

U

289 **U**
leggiere



295



300



305

V



311



319



324



329

W

334



339



Viola 2

344



349



354



361



368



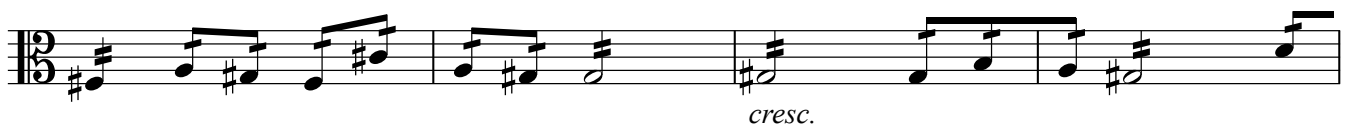
374



381



388



392



Viola 2

398 *pp* *sim.* *f pp*

407 *sf sf sf cresc. p legato*

415

424 *f pp* AA

430

435 *p cresc.*

440 *mf*

445

448 *f*

Viola 2

451 **BB**



457



462



467 **CC**



472



477



482 **DD**



488



494



Viola 2

**4. Cadenza****Adagio** $\text{♩} = 60$ **EE**